



# TopView®



Alarm Management, Notification, and Remote Monitoring Software

## EXELE TopView Software Data Sheet

v6.8.7 Aug 2010

TopView Software is a comprehensive, cost-effective alarm management and notification tool that is being used successfully wherever data measurements need to be monitored, such as in water and wastewater, electric power generation, oil and gas, manufacturing, building management, chemical, pulp and paper, research, communication, transportation, IT, and system performance.

### Operating Systems

Windows 2000 (Pro/Server), XP, Windows Server 2003/2008, Vista, Windows 7 (32 and 64-bit)

### Data Sources: Process & Automation or IT

#### Process & Automation

- **TopView OPC/SCADA:** monitors data from OPC Servers. OPC Servers are available for most PLCs, SCADA Systems, DCS's, and Historians
- **TopView PI:** monitors OSISoft PI data

#### Databases

- **TopView SQL :** monitors data from ODBC and OLEDB databases, files, and spreadsheets

#### IT: System Performance & Network Ping

**TopView PerfMon:** Microsoft Windows System Performance and Network Ping Response

### General

- Runs interactively or as a Windows Service
- Multi-level Tag Groups for categorizing monitored tags and notification
- Verbose Application, Alarm and Notification logs; optional alarm logging to SQL Server
- Alarm comments/annotations
- Monitor and alarm result of calculation/expression
- Audit change log and automatic backup
- Hot failover option for alarm engine and clients
- TopView performance and health monitoring with notification
- Configuration, Notification, and Recipient reports

### Alarm/Event Detection

- Configurable value, value status (good, bad, OPC uncertain, PI questionable), timestamp-age, value flat-line, and value-change alarm conditions
- Complex alarm conditions involving multiple tags and conditions
- Flexible alarm condition scheduling (days/time-of-day)
- Escalation of unacknowledged or persistent alarms through multi-step escalation templates
- Custom alarm and return to normal messages
- Fixed and dynamic limits (use other tag values as limits)
- Delay of alarm unless condition is active for a period of time
- Expiration of alarm after a period of time
- Alarm limit value dead bands
- Blackout period for alarm frequency filtering
- Suppress alarm detection if associated equipment not running (state-based alarming)
- Set alarm conditions inactive or active
- Suppression of startup alarms
- Launch other applications in response to alarm conditions
- User comments to document each set of alarm limits
- Automate configuration changes to tags, alarm conditions, and alarm limits (scripts or custom code)



Visit [exele.com](http://exele.com) for more information and free evaluation download.

Exele Information Systems, Inc • +1 -585-385-9740 (USA)



# TopView®



Alarm Management, Notification, and Remote Monitoring Software

## Audible Alarms and Notification

Notification methods include text (SMS, E-mail, PDA, pagers), audible (WAV and text-to-speech), and numeric pagers

- Audible text-to-speech and WAV file alarms
- E-mail notification: multiple delivery methods supporting all e-mail devices (PC, cell phone, PDA) with reply acknowledge (POP3)
- Attach files to email notification messages
- SMS Notification: GSM cellular modem delivery of SMS text messages with reply acknowledge
- Modem notification: TAP protocol for alphanumeric pagers, cell phones and direct-to-pager (numeric)
- Voice notification: audible text-to-speech notification using voice modems or telephony cards to any phone
- Return-to-normal notification messages
- Resend alarms that remain active
- Escalate persistent or unacknowledged alarms
- Custom message content and email subjects
- Prioritized message delivery
- Output points (write to tags) upon alarm, return-to-normal, and alarm acknowledgement events
- Contact lists and flexible recipient scheduling
- Local and remote Icons in Windows Notification area display new alarm messages

## Bi-direction Email/SMS communication

- Reply to received email/SMS text notification message to acknowledge alarms
- Send request email/SMS to retrieve current information for any monitored point (value, alarm status, acknowledge status)
- Send request email to retrieve customized Snapshot Reports of current values and alarms

## Reports

- HTML Snapshot reports of current values/alarms with local file output, publishing, and email
- Ad-hoc and Scheduled alarm history reports with local file output and email

## Remote Access and Acknowledge

TopView offers multiple options for remotely accessing TopView and acknowledging alarms:

- Remote Access: Desktop and Windows Mobile *TopView Remote Viewer*
- Remote Access: Remote Dial-in (voice menu) from any phone
- Remote Acknowledgement of alarms through dial-in phone (voice menu) or through the Remote Viewer
- 2-way Email/SMS communication for alarm acknowledge and current state information requests

## Remote Alarm Console

- *TopView Remote Viewer* provides alarm monitoring, streaming audible alarms, and alarm acknowledgement in a rich, yet thin client.
- User-specific, customized views of alarm activity
- Query and filter alarm history
- Interactive alarm analytics (tables and graphs)
- Assignable permissions to view and acknowledge alarms
- Custom fields and hot links for each monitored point (instructions, documents, web URL, external application launch)

## Configuration and Management

- Intuitive Configurator for users of all levels and abilities
- Bulk configuration of monitored points, alarm conditions, and recipients in Excel
- Local file-based configuration storage
- Administrative tools for real-time monitoring of alarms, notification queues, performance, and logs

Exele Information Systems, Inc.  
445 W. Commercial Street  
East Rochester, NY 14445 USA  
+1 585-385-9740  
[www.exele.com](http://www.exele.com)



Visit [exele.com](http://exele.com) for more information and free evaluation download.

Exele Information Systems, Inc • +1 -585-385-9740 (USA)

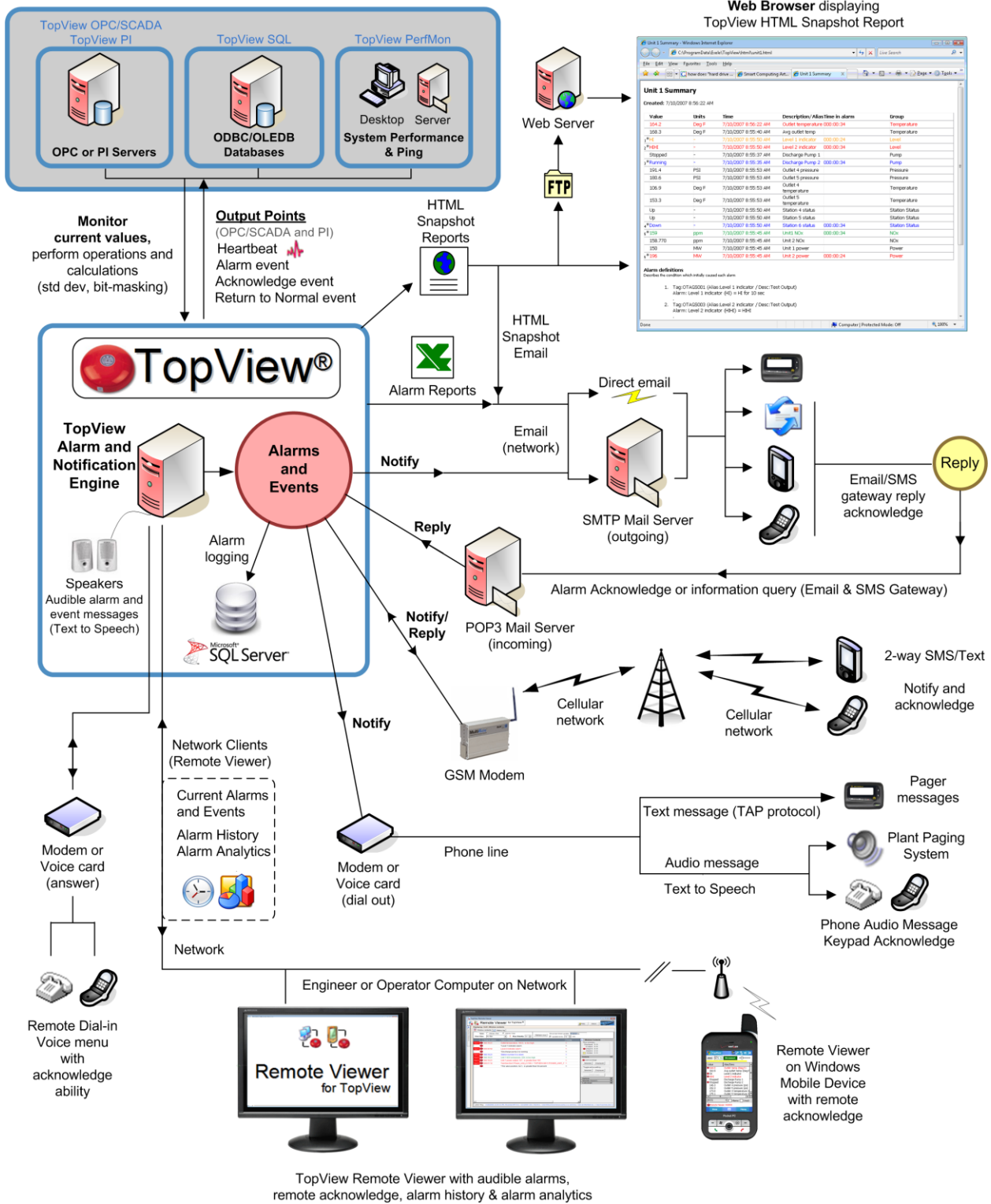


# TopView®



Alarm Management, Notification, and Remote Monitoring Software

## Overview of Exele TopView Software



Visit [exele.com](http://exele.com) for more information and free evaluation download.

Exele Information Systems, Inc • +1 -585-385-9740 (USA)