

TopView Remote Viewer

Remote Client for TopView

TopView Remote Viewer

Remote Viewer for TopView
Process Alarming and Notification

Displaying: Unit 1 Alarms, Window contents

Refresh now Update every 10 seconds Since last update: 4 seconds

Value	Alias/Desc	Time in alarm
164.2	Outlet temp (Deg F)	000:01:55
HIHI	Level 2 indicator	000:01:55
Running	Discharge Pump 2	000:01:55
Down	Station 6 status	000:01:55
200	Unit1 NOx (ppm)	000:01:55
110	Unit 1 power (MW)	000:01:55
168.3	Avg outlet temp (Deg F)	
Second tag i...	Level 1 indicator	
145.1	Outlet 4 pressure (psi)	
167.5	Outlet 5 pressure (psi)	
113.8	Outlet 4 temperature (Deg F)	
202.2	Outlet 5 temperature (Deg F)	
Up	Station 4 status	
Up	Station 5 status	
102.38	Unit 2 NOx (ppm)	
103	Unit 2 power (MW)	

Window contents

Row summary

Displayed: 16
In Alarm: 6
Unack't: 6
Inactive: 0
Hidden: 1

Acknowledge

Selected All

Toggle active setting

Selected All

Options

Unsort

Show alarms only
 Show hidden rows
 Flash alarms

Font size: 10
 Font bold

Latest Msg: 01-Nov-2005 09:20:04: Listen socket (6150) accepted connection from (127.0

©Copyright 2006 EXELE Information Systems, Inc.

All rights reserved

EXELE Information Systems

445 W. Commercial Street

E. Rochester, NY 14445

(585) 385-9740

<http://www.exele.com>

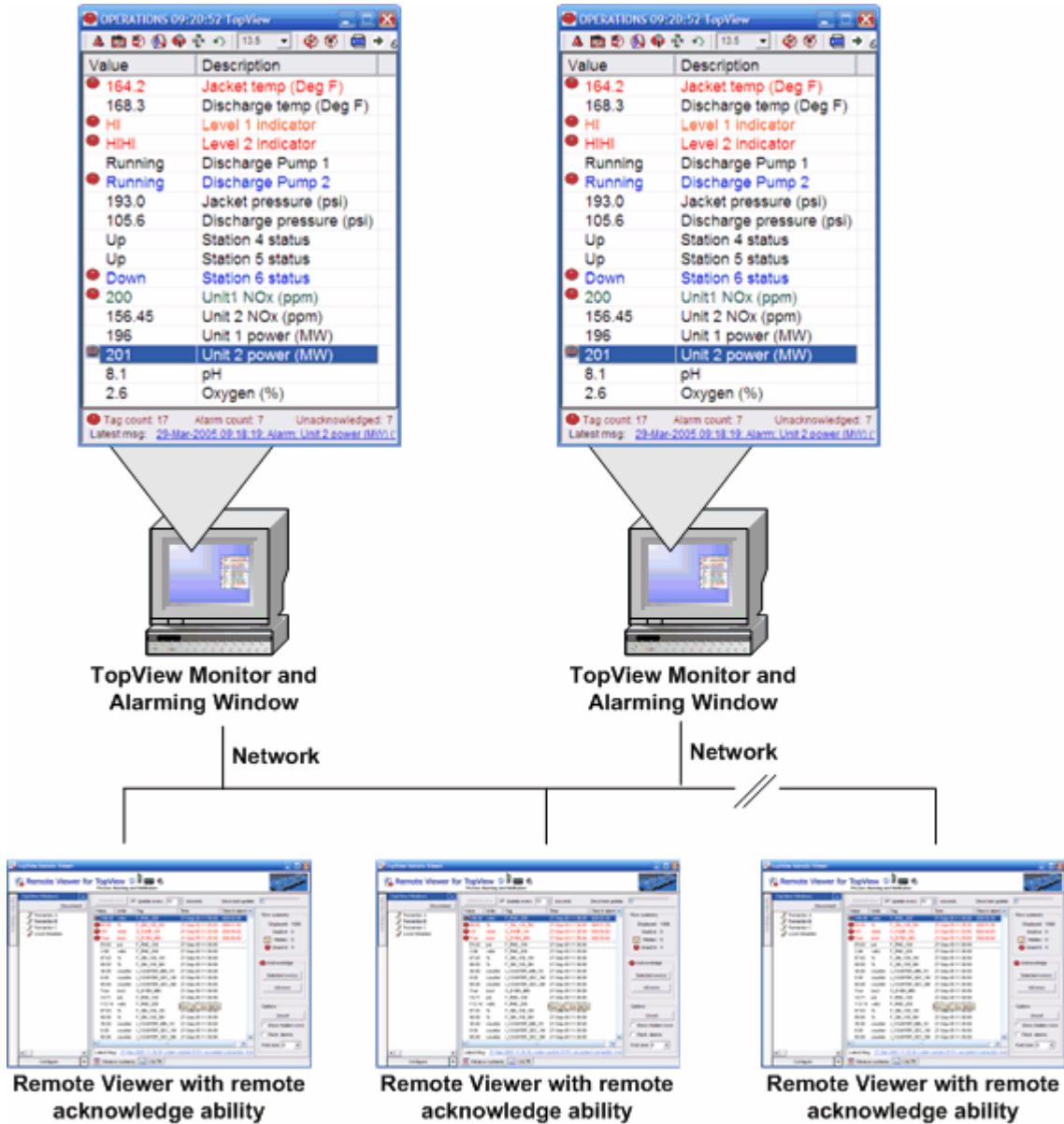
Table of Contents

Overview	3
Configuring the TopView Window to Accept Connections	4
Installing the Remote Viewer.....	4
Why do I get a security error when I run the Remote Viewer?.....	4
Specifying which TopView Windows to View.....	4
What about Firewalls?.....	4
TopView Windows List.....	5
Alarm Count.....	5
Configure	6
Connecting and Disconnecting to TopView Windows.....	7
Hide and Restore the TopView Window List.....	8
Window Contents.....	9
Updating the Window Contents	9
Row summary	10
Acknowledge	11
Toggle active setting.....	11
Options	12
History Log.....	13
Updating the History log	13
Row summary	14
Message filter	14

Overview

The TopView Remote Viewer allows TopView users to to monitor TopView Windows from anywhere on your network. Using the Remote Viewer, you can

- Monitor the value and status of all TopView tags
- View and acknowledge any alarm conditions
- Set tags inactive to turn off alarming and notification
- View the history log



Administrator or Operator PC's on Network

Configuring the TopView Window to Accept Connections

Before you can use the Remote Viewer, you must configure each TopView Window to accept remote connections. Please see the TopView documentation section "Remote Access" for more information.

Installing the Remote Viewer

There is no installation for the Remote Viewer. The Remote Viewer is installed with TopView v5.5 and later. If you need to run the Remote Viewer from additional computers, you can download it from our web site.

Why do I get a security error when I run the Remote Viewer?

Your company may have a default .Net Security policy which prevents .Net assemblies from running properly unless given permission to do so.

You can adjust the .Net security for the Remote Viewer. Follow these steps:

- Control Panel>Admin tools>Microsoft .NET Framework 1.1 Wizards
- Click "Trust an assembly"
- Select "To this computer" or "This user" to allow this application for the computer or user
- Browse to RemoteViewer.exe
- Set security to "Full trust"
- Click "Finish"

Specifying which TopView Windows to View

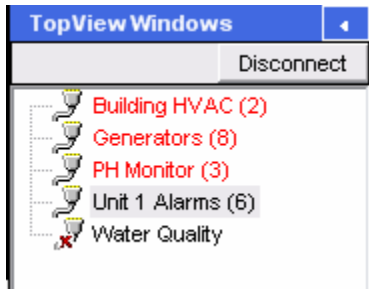
Each TopView Window can listen for incoming connections on a TCP/IP port. Using the Remote Viewer, you must specify the computer name or IP address of the running TopView Window along with the port number. Each TopView Window running on the same computer must use a different port number. The user may choose the port number for each TopView Window as part of its configuration. See "Remote Access" in the TopView documentation for more information.

What about Firewalls?

When you are using the Remote Viewer to access TopView Windows across a network, you must make sure that the chosen port for each TopView Window is not blocked by a firewall.

TopView Windows List

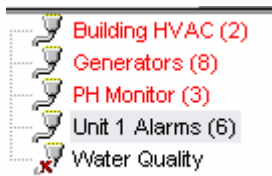
The TopView Windows List contains the TopView Windows which you can connect to and monitor. You must configure each item in this list using the Configure section.




Note: before you can connect to a TopView Window using the Remote Viewer, you must configure the TopView Window to accept remote connections. In addition, the TopView Window must be running.

Alarm Count

In parentheses next to each TopView Window name, the total number of rows/tags in alarm for the TopView Window is displayed. If the alarm count for a TopView Window changes and this TopView Windows is not currently selected, the font color will change to red.



Configure

You can display and hide the Configuration Section by clicking 




Name: User entered name for this TopView Window. This name will be displayed in the TopView Window List and can be different than the Configuration file used by the TopView Window.

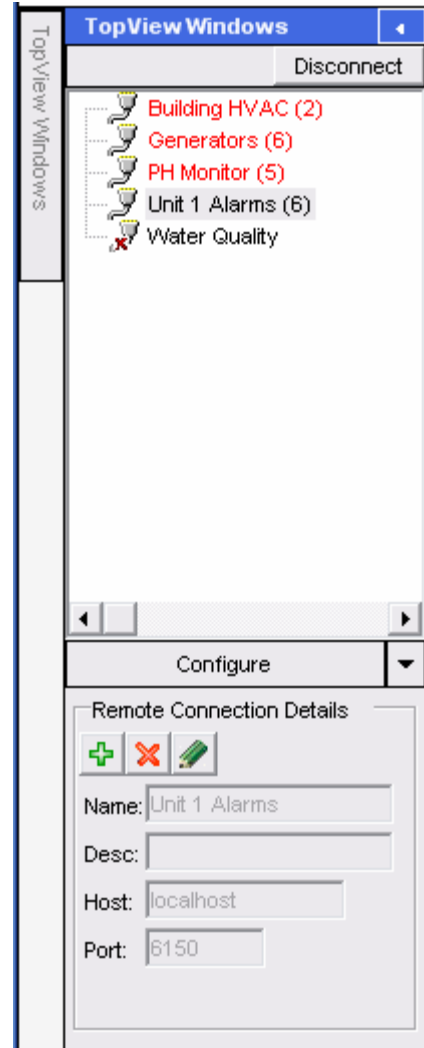
Desc: User-entered description.

Host: host name or IP address for the computer running the TopView Window.

Port: the port number for the TopView Window. This port is chosen by the user as part of the TopView Window configuration. See "Remote Access" in the TopView documentation for more information.



Toolbar:

-  Add a new TopView Window Configuration
-  Deleted selected Configuration
-  Edit selected Configuration



Connecting and Disconnecting to TopView Windows

The TopView Window List displays the TopView Windows which have been configured for remote access. The current connection state to each TopView Window is displayed by the icon:

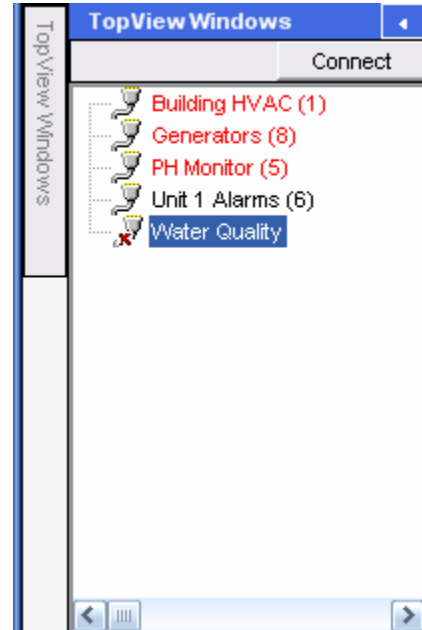
-  Connected to TopView Window
-  Not connected to the TopView Window

To connect to a TopView Window

- Select a TopView Window and click the [Connect] button
- Double-click a disconnected TopView Window in the list

To disconnect from a TopView Window

- Select a TopView Window and click the [Disconnect] button
- Double-click a connected TopView Window in the list

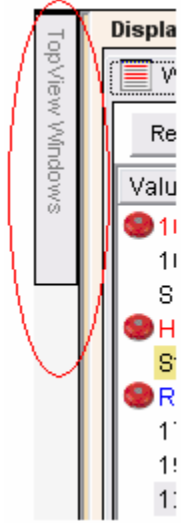


Hide and Restore the TopView Window List

To temporarily hide the TopView Window List and Configuration, click the Hide button

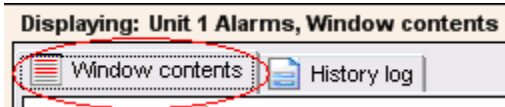


To restore a hidden TopView Window List, click the vertical TopView Windows tab



Window Contents

When you select a connected TopView Window in the TopView Windows List, you will see the current tags and alarms in the Window Contents pane to the right. Make sure that the Window Contents tab is selected.



TopView Remote Viewer

Remote Viewer for TopView
Process Alarming and Notification

TopView Windows: Disconnect

- Building HVAC (1)
- Generators (5)
- PH Monitor (4)
- Unit 1 Alarms (6)
- Water Quality (3)

Displaying: Unit 1 Alarms, Window contents

Window contents History log

Refresh now Update every 10 seconds Since last update: 4 seconds

Value	Alias/Desc	Time in alarm
164.2	Outlet temp (Deg F)	000:02:29
HIHI	Level 2 indicator	000:02:29
Running	Discharge Pump 2	000:02:29
Down	Station 6 status	000:02:29
200	Unit1 NOx (ppm)	000:02:29
109	Unit 2 power (MW)	000:00:13
Second tag i...	Level 1 indicator	{inactive}
132.6	Outlet 4 pressure (psi)	{inactive}
174.8	Outlet 5 pressure (psi)	{inactive}
107.3	Outlet 4 temperature (Deg F)	{inactive}
168.3	Avg outlet temp (Deg F)	
195.8	Outlet 5 temperature (Deg F)	
Up	Station 4 status	
Up	Station 5 status	
102.24	Unit 2 NOx (ppm)	
104	Unit 1 power (MW)	

Window contents

Row summary

Displayed: 16

In Alarm: 6

Unack'd: 7

Inactive: 4

Hidden: 1

Acknowledge

Selected All

Toggle active setting

Selected All

Options

Unsort

Show alarms only

Show hidden rows

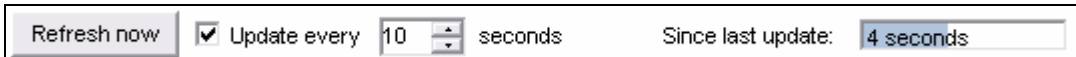
Flash alarms

Font size: 10

Font bold

Latest Msg: 01-Nov-2005 09:22:07: Row(s) set INACTIVE: 3,7,8,9

Updating the Window Contents



If you check the "Update every..." checkbox, the Remote Viewer will re-query the selected TopView Window at the selected refresh interval. If the "Update every..." checkbox is not selected, you can re-query the TopView Window using the [Refresh now] button.

Row summary

Displays a summary of the current Window Contents.


Displayed

The number of tags/rows displayed. This can be altered using some of the Option items below.


In Alarm

The number of tags/rows currently in alarm.

Unack'd

The number of unacknowledged alarms. Unacknowledged alarms will have a bell icon  at the start of the row.


Inactive

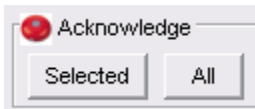
The number of inactive rows. Rows can be set inactive using the  button on TopView Window's top toolbar or using the "Toggle active settings" buttons described below.

Hidden

The number of hidden rows. The hidden state of each row can be set in the TopView Window's configuration. You can display hidden rows using the checkbox in the Options section.

Acknowledge

You can use the Remote Viewer to acknowledge tags/rows which are currently unacknowledged. Unacknowledged rows/tags have a bell icon  at the start of the row. Once you successfully acknowledge an alarm, the bell icon will disappear. The acknowledgement is performed by sending an acknowledge request to the TopView Window.



Selected

You can select multiple rows using the Ctrl or Shift key on your keyboard. Click the [Selected] button to acknowledge the selected rows.

All

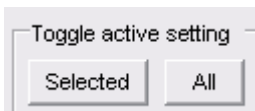
Click the [All] button to acknowledge all unacknowledged rows.

Toggle active setting

You can use the Remote Viewer to toggle the active setting for each row. An inactive row will continue to display the current tag value, yet **TopView alarm conditions will be ignored and all notification will be suppressed** until the row is set active.

Inactive rows will be displayed with a strikethrough line in gray font with the text "(inactive)" in the "Time in alarm" column.

Up	Station-1 status	(inactive)
----	------------------	-----------------------



Selected

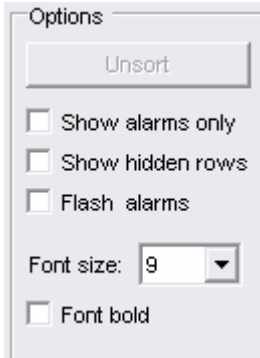
You can select multiple rows using the Ctrl or Shift key on your keyboard. Click the [Selected] button to toggle the active setting for the selected rows.

All

Click the [All] button to toggle the active setting for all rows.

Options

Options can be used to filter the displayed rows or change the characteristics of the displayed rows.



Unsort

The TopView rows (Window Contents tab) can be sorted by clicking one of the column headers. The rows will be sorted based of the clicked column header.

Value	Alias/Desc	Time in alarm
-------	------------	---------------

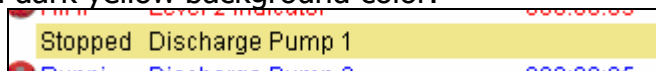
The [Unsort] button will remove any sorting and display the rows in the same order as entered in the TopView Window's configuration.

Show alarms only

Displays only the tags/rows which are currently in alarm

Show hidden rows

Displays hidden rows. When displayed in the Window Contents, hidden rows will have a dark yellow background color.



Flash alarms

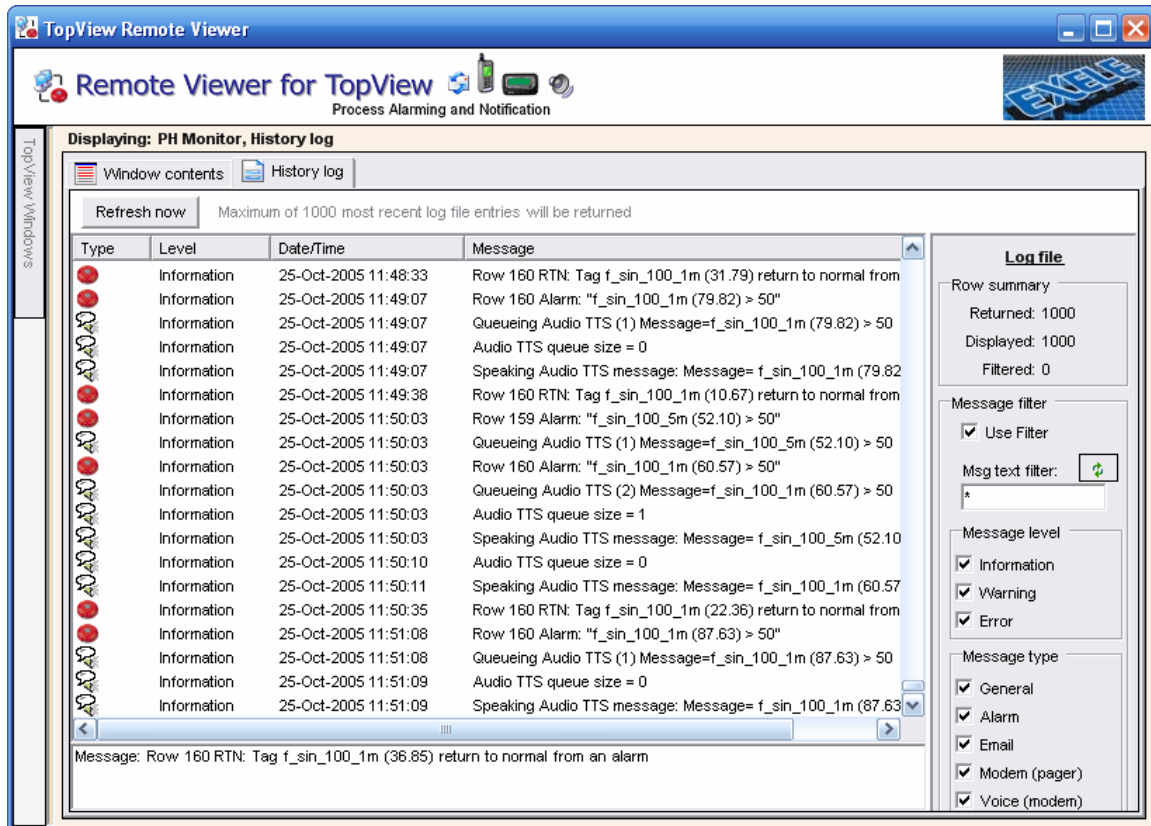
Rows which are currently in alarm will flash on and off

Font settings

Select the font settings for displayed Window Contents

History Log

Using the Remote Viewer, you can retrieve the contents of each TopView Window's history log. Once you have selected a connected TopView Window in the TopView Window List, select the History log tab.



Updating the History log

When you first select the "History log" tab, the history log information will be retrieved from the TopView Window. Press the [Refresh now] button to update the History log information. There is no automatic refresh for the displayed History log information.

Note: the Remote Viewer will show up to 1000 of the most recent History log records.

Row summary

Displays a summary of the current Log file information

Returned

Number of History log records returned from the TopView Window.

Displayed

Number of History log records currently displayed (not filtered)

Filtered

Number of History log records not displayed (not filtered)


Message filter

Use the message filter to display a partial list of the history log records returned from TopView.

Use Filter

Checking this item will turn filtering on.

Msg text filter

Enter a text filter for the history log "Message" column. Use an asterisk "*" to match multiple character, a question mark "?" to match single characters, blank or a single * to match all text. Once you have changed the text filter, click the refresh button  to refresh the displayed history log records using the new text filter.

Message level

Select the message level(s) you would like displayed. Message level can be Information, Warning or Error.

Message type

Select the message type(s) you would like displayed.